

## Summer 2021 Mystery Quilt: Cutting Directions

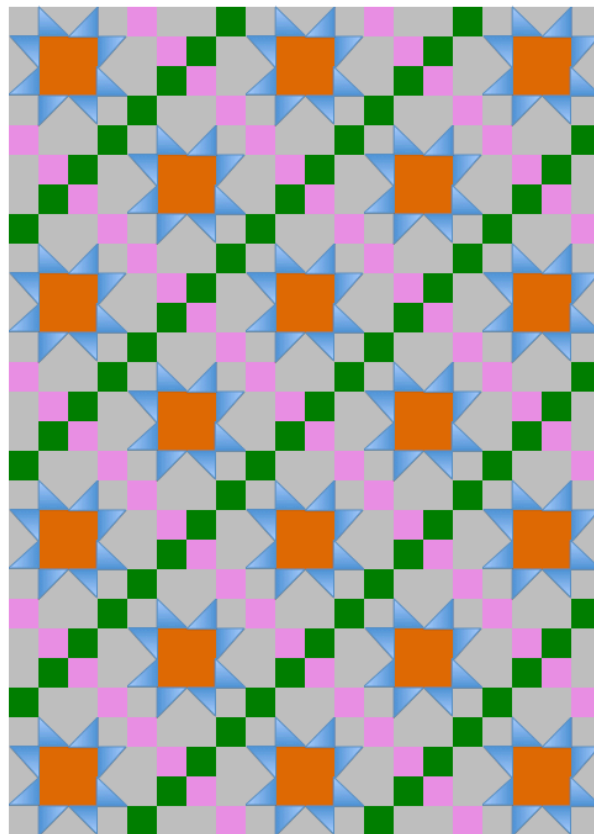


### Clue # 10 a

Arrange blocks as shown below. Ensure that Contrast #2 goes in one direction and Contrast #3 goes in the opposite direction when matching seams.

Web quilt together. If you don't know how to web a quilt, see this tutorial:

<https://www.youtube.com/watch?v=mj4vdHBaEzg>



Summer 2021 Mystery Quilt: Cutting Directions

**Clue # 10 b**

Add Borders to the quilt. For a quick easy way to add borders, see this tutorial:

<https://www.youtube.com/watch?v=Io65pwM3vJ8&t=19s>

